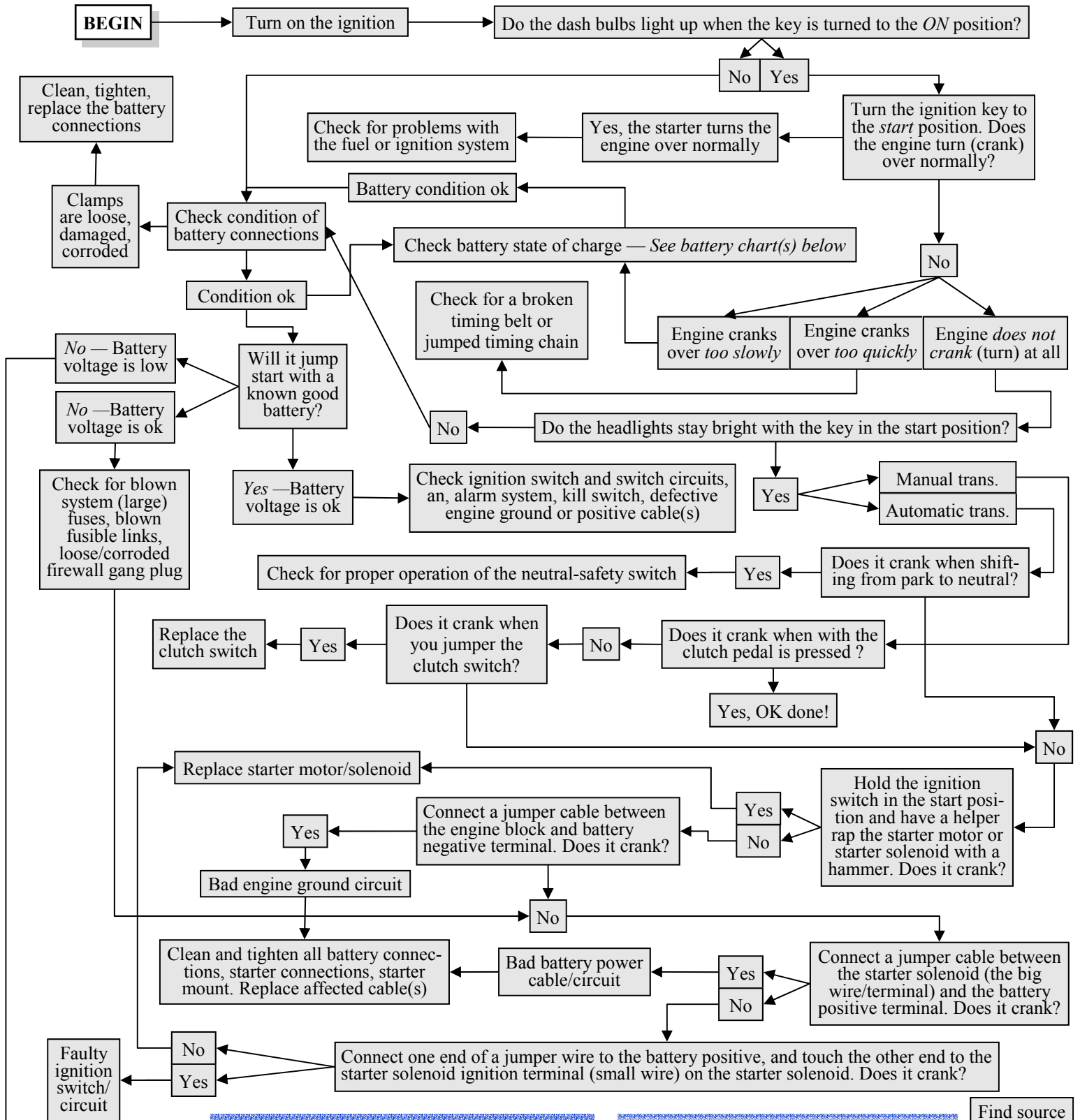


Nutz & Boltz No Start Flow Chart



BATTERY VOLTAGE VS. STATE OF CHARGE

12.7 Volts and up>	Battery sulphated, <i>replace</i>
12.66 Volts	100% Battery new, fresh charge
12.45	75% Battery Ok
12.24	50% Recharge battery & recheck
12.06	25% " " "
11.89	0% " " "

BATTERY SPECIFIC GRAVITY VS. BATTERY STATE OF CHARGE

1.265	100% Battery new, fresh charge
1.225	75% Battery Ok
1.190	50% Recharge battery & recheck
1.155	25% " " "
1.120	0% " " "

Find source of parasitic draw
 Battery goes dead over time

